



303 BAY STREET  
CONDOMINIUM

---

LUXURY LIFE IN THE HEART OF THE TORONTO







**LUXURY  
LIFE**

IN THE  
HEART  
OF THE  
TORONTO





# ARCHITECTURE

- Zaha Hadid's international body of work is largely defined by graceful curves inspired by nature. She brings this sensibility to **303 Bay St**, marking a dramatic shift away from the hard angles that dominate standard residential architecture.
- The building's elegant hand-crafted metal façade is driven by one continuous line, which loops its way skywards. These dynamic curves create a distinctive chevron pattern that embraces interlacing levels, maximizing privacy and security between residences.
- As the chevron weaves up from the ground, its folds create a multi-level design that links residence exteriors and interiors together in one sweeping movement. The result is a vertical landscape sitting directly on the High Line, comprising 39 unique residences.

---

Life is best lived when you're free. And that's what **303 BAY STREET** is all about. This is life in the city with all the vibrancy and style you've earned. is more ready to accommodate you in every way.

That's why the **303 BAY STREET** is the only place for you to build your life, live your life, experience your life.



# INTERIOR

- The collection of residences at **303 Bay St.** represents Zaha Hadid's vision for modern living. Working within her distinctive architectural language, she applies a powerful elegance and detail to the interiors, focusing on nuances that reflect the overall experience of the building.
- The 39 loft-like residences are individually crafted, each with the artist's signature mark woven into the design. Residents become immersed in Hadid's fluid world—a thoughtful collection of living spaces. The interiors integrate seamlessly into the sculpted nature of the building's exterior, creating one monumental piece of art.

- TOP LEFT: LIGHT-FILLED KITCHENS
- TOP RIGHT: DINING ROOM FEATURING SCULPTURAL ELEMENT
- BOTTOM LEFT: KITCHEN DESIGNED BY ZAHA HADID & BOFFI
- BOTTOM MIDDLE: LIVING ROOM WITH DINNING ROOM
- BOTTOM RIGHT: LIVING ROOM WITH SCULPTURAL STAIRCASE







## AMENITIES

- Zaha Hadid approaches the amenities areas as four different collections that are tied together with a clean and consistent palette of materials. These elements are then incorporated in slightly nuanced ways to create a progression in mood and atmosphere based on the level of intimacy of each space.
- A seamless lifestyle is assured by Related Management's holistic approach to service as both the developer and manager of this unique residential building, ensuring that residents of **303 Bay st.** will receive a proven suite of offerings on par with Zaha Hadid's visionary design. Residents can also curate their own tailored experience with access to an extensive collection of concierge services through their designated Luxury Attaché representative.

1. 75 FOOT SKY LIT POOL
2. LOBBY WITH SCULPTURAL WALL
3. FITNESS CENTRE
4. SECURED PARKING PORTAL
5. ENTERTAINMENT SUITE & HIGH LINE TERRACE
6. LOBBY WITH VIEW ONTO GARDEN
7. PRIVATE IMAX





# OLD TOWN TORONTO

- Old Town is a neighbourhood and retail district in downtown Toronto, Ontario, Canada. It was the first of Toronto's named neighbourhoods, having acquired the moniker no later than 1815, at which time the original town of York was expanding.

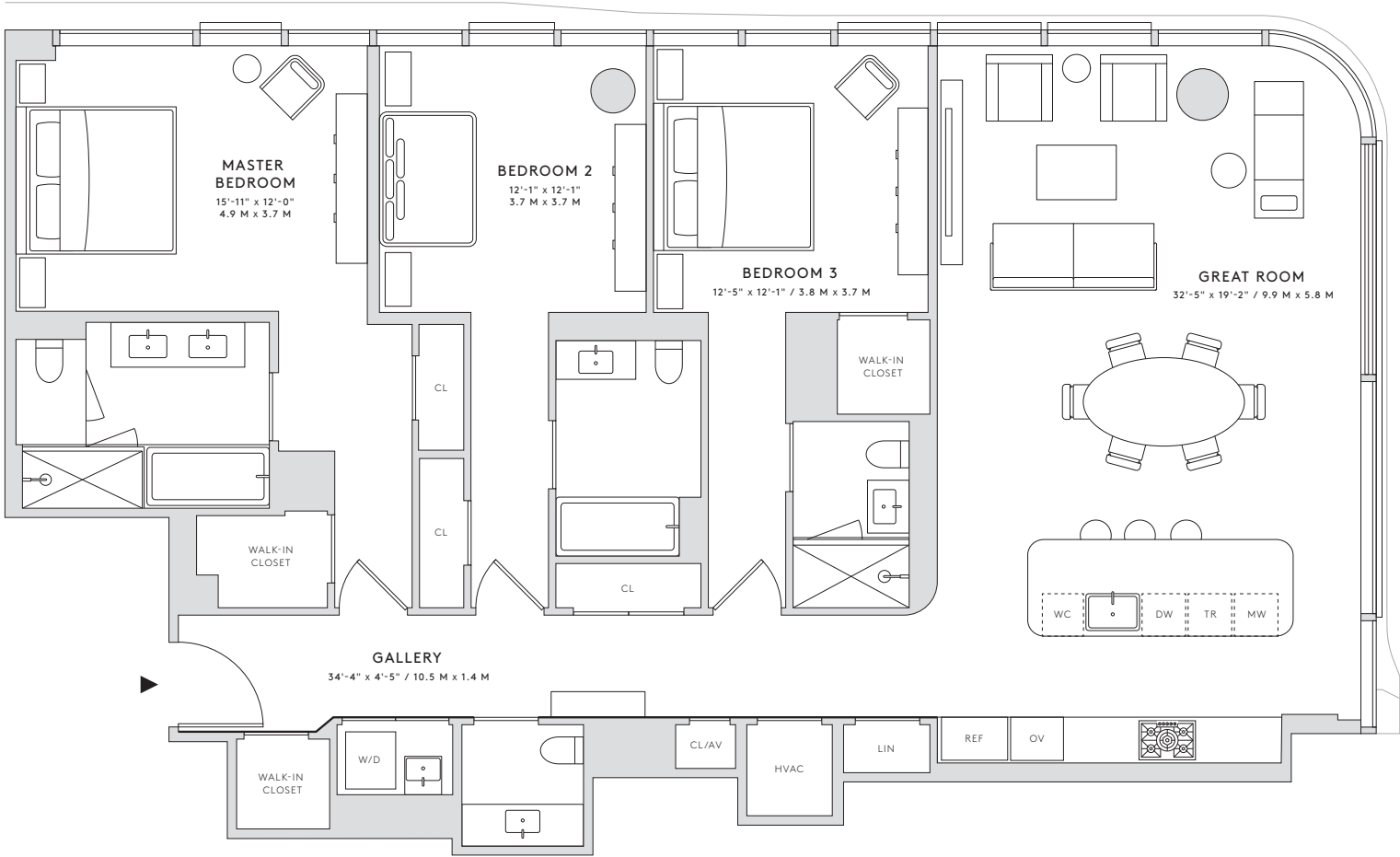


1. ST. LAWRENCE MARKET
2. THE DISTILLERY DISTRICT
3. KING EAST DESIGN DISTRICT
4. BAY STREET
5. HISTORIC QUEEN EAST
6. CORKTOWN
- 7 & 8. TOWN OF YORK



# Z A H A H A D I D

- Born in Baghdad Iraq in 1950, Zaha Hadid commenced her college studies at the American University in Beirut, in the field of mathematics. She moved to London in 1972 to study architecture at the Architectural Association and upon graduation in 1977, she joined the Office of Metropolitan Architecture. She also taught at the Architectural Association with OMA collaborators Rem Koolhaas and Elia Zenghelis.
- Known as an architect who consistently pushes the boundaries of architecture and urban design, her work experiments with new spatial concepts intensifying existing urban landscapes and encompassing all fields of design, from the urban scale to interiors and furniture.



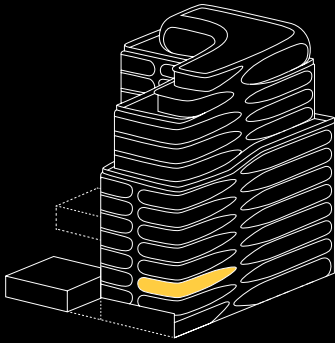
33  
BAY STREET

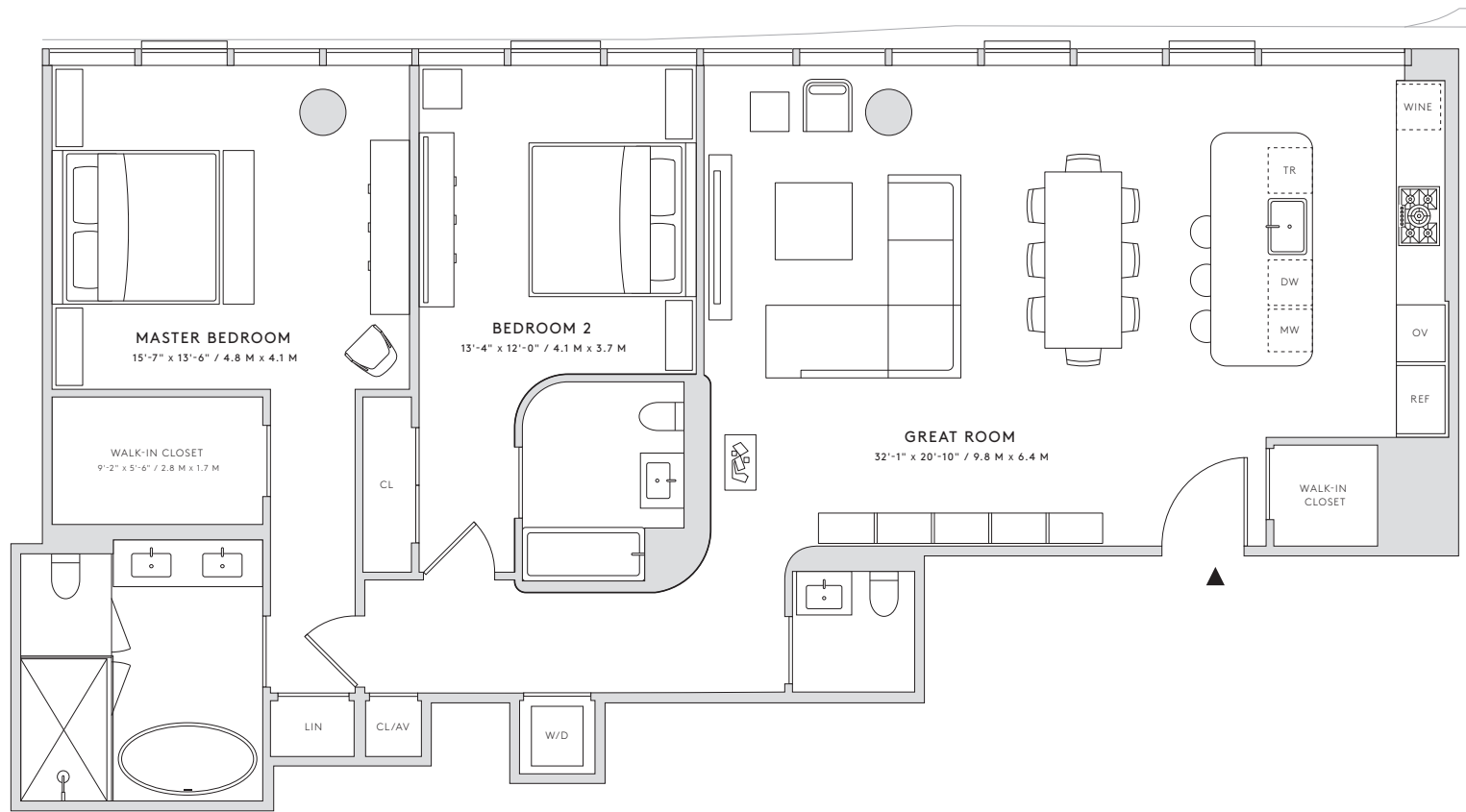
RESIDENCE 05  
LEVEL 4 ELEVATION 21'

Interior: 2,065 Sq. Ft. /192 Sq. M.

3 BEDROOMS  
3 BATHS  
POWDER ROOM

- » North & East Exposures
- » Corner Great Room with Open Kitchen
- » Signature Zaha Hadid Sculptural Element with Opalescent-Finish Wall Paneling Master Bedroom Suite with Walk-In Closet
- » En-Suite Bathrooms in Bedrooms 2 & 3
- » Utility Room with Washer-Dryer and Sink





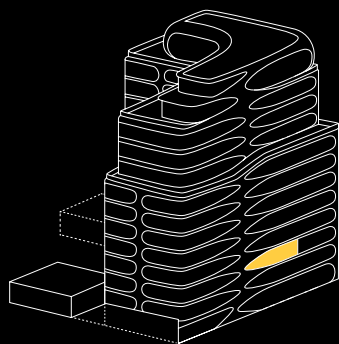
**33**  
BAY STREET

**RESIDENCE 08**  
LEVEL 5 ELEVATION 27'

Interior: 1,691 Sq. Ft. /157 Sq. M.

2 BEDROOMS  
2 BATHS  
POWDER ROOM

- » North Exposure
- » Great Room with Open Kitchen
- » Signature Zaha Hadid Sculptural Element with Opalescent-Finish Wall Paneling Master Bedroom Suite with Large Walk-In Closet
- » En-Suite Bathroom in Bedroom 2



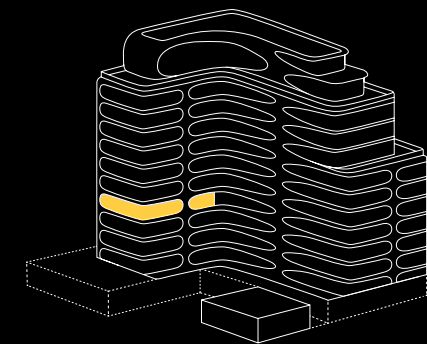
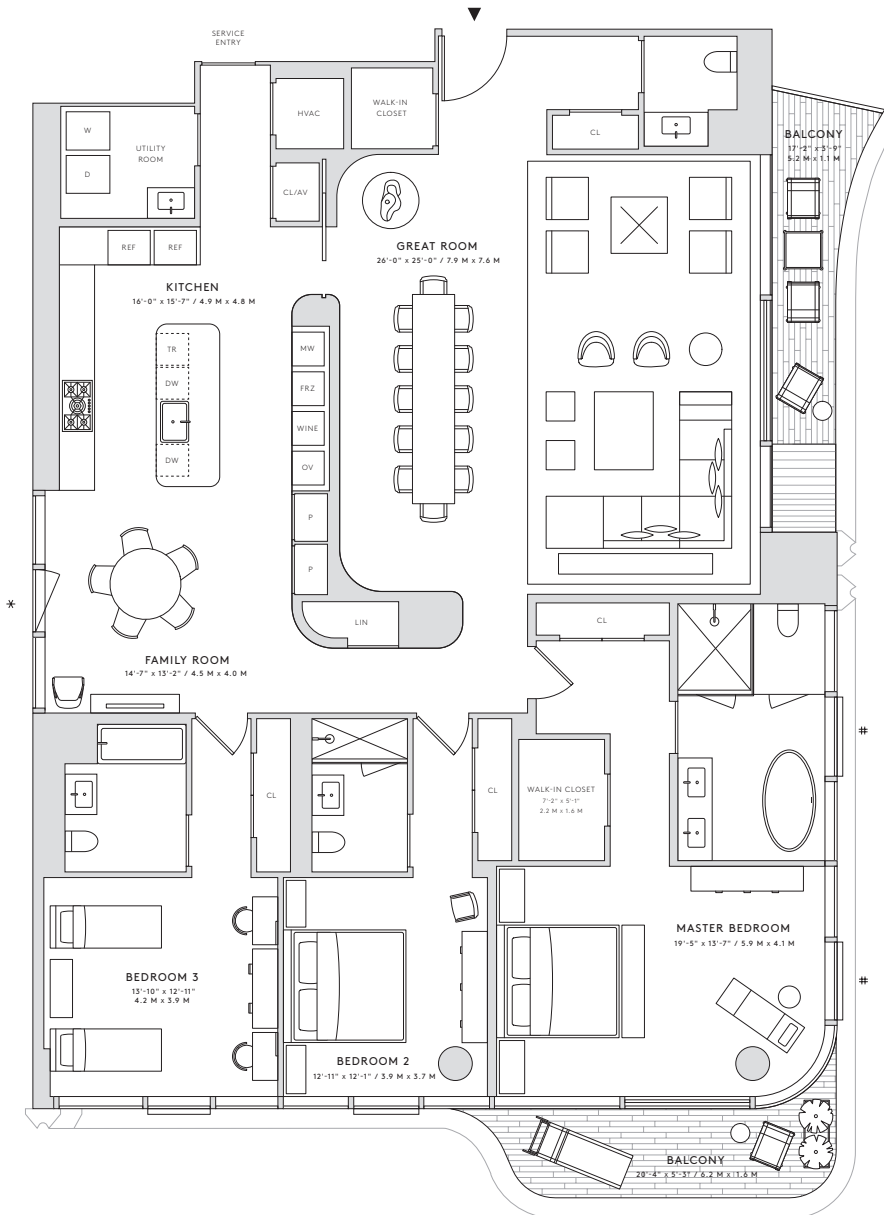
**33**  
BAY STREET

**RESIDENCE 16**  
LEVEL 9 ELEVATION 51'

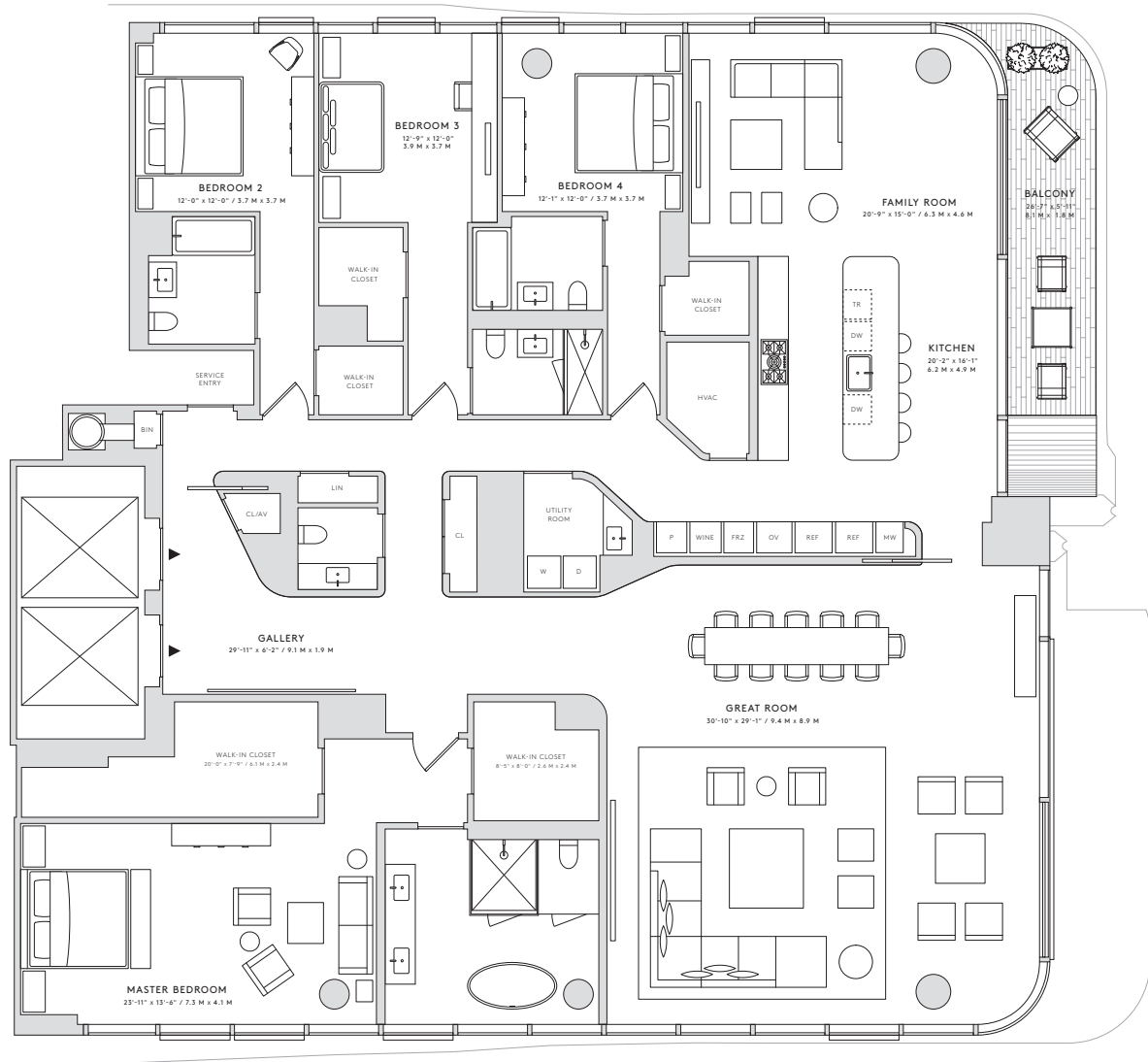
Interior: 2,924 Sq. Ft. /272 Sq. M.  
Exterior: 198 Sq. Ft. /18 Sq. M.

3 BEDROOMS  
3 BATHS  
POWDER ROOM

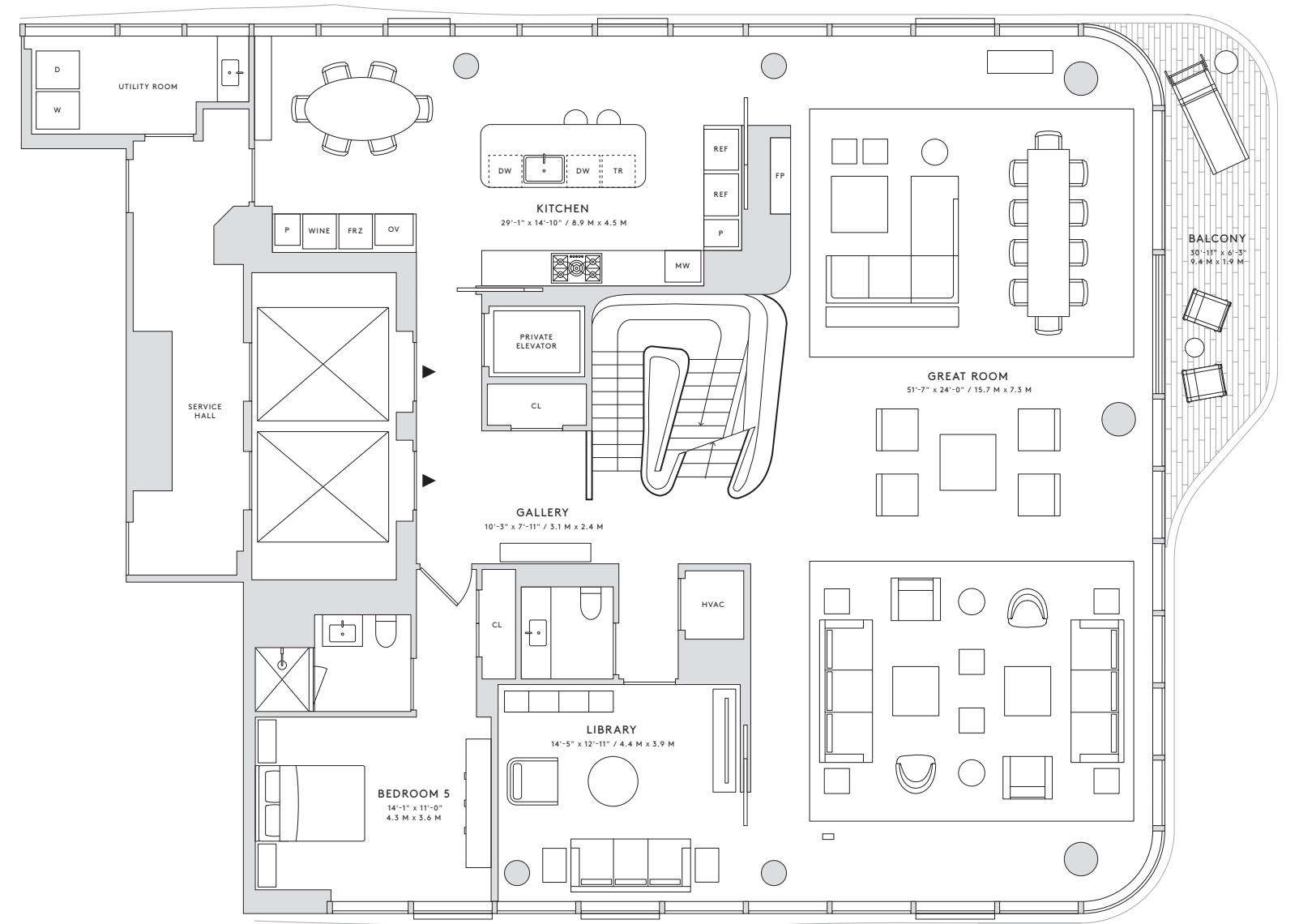
- » South, East & West Exposures
- » 650-square foot (approx.) Great Room with Balcony
- » Signature Zaha Hadid Sculptural Element with Opalescent-Finish Wall Paneling Eat-In Kitchen
- » Family Room
- » Corner Master Bedroom Suite with Balcony and Walk-In Closet
- » En-Suite Bathrooms in Bedrooms 2 & 3
- » Utility Room with Side-by-Side Washer-Dryer and Sink
- » Dedicated Service Entrance







## UPPER LEVEL



**33**  
BAY STREET

## RESIDENCE 20

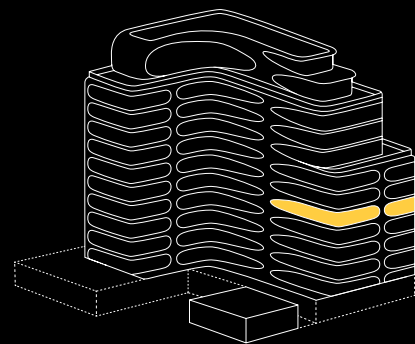
LEVEL 10 ELEVATION 57'

Interior: 4,217 Sq. Ft. /392 Sq. M.  
Exterior: 199 Sq. Ft. /18 Sq. M.

4 BEDROOMS  
4 BATHS  
POWDER ROOM

- » South, East & North Exposures
- » Direct Elevator Entrance
- » 900-square foot (approx.) Corner Great Room
- » Signature Zaha Hadid Sculptural Element with Opalescent-Finish Wall Paneling Windowed Eat-In Kitchen
- » Corner Family Room with Balcony

- » Master Bedroom Suite with Two Large Walk-In Closets
- » En-Suite Bathrooms and Walk-In Closets in Bedrooms 2, 3 & 4
- » Utility Room with Side-by-Side Washer-Dryer and Sink
- » Dedicated Service Entrance



**33**  
BAY STREET

## PENTHOUSE 37

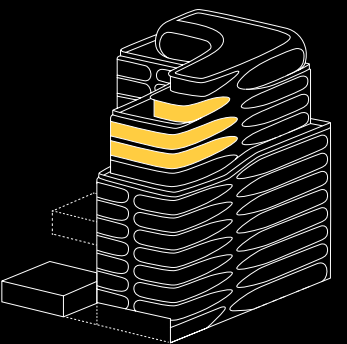
LEVEL 18 & 20  
ELEVATION 105' AND 116'  
ROOF TERRACE  
ELEVATION 130'

5 BEDROOMS  
6 BATHS  
POWDER ROOM

- » Triplex Penthouse
- » South, East & North Exposures
- » Direct Elevator Entrance
- » Private In-Residence Elevator
- » 1,250-square foot double-corner Great Room with Balcony and Fireplace
- » Library
- » Windowed Eat-In Kitchen

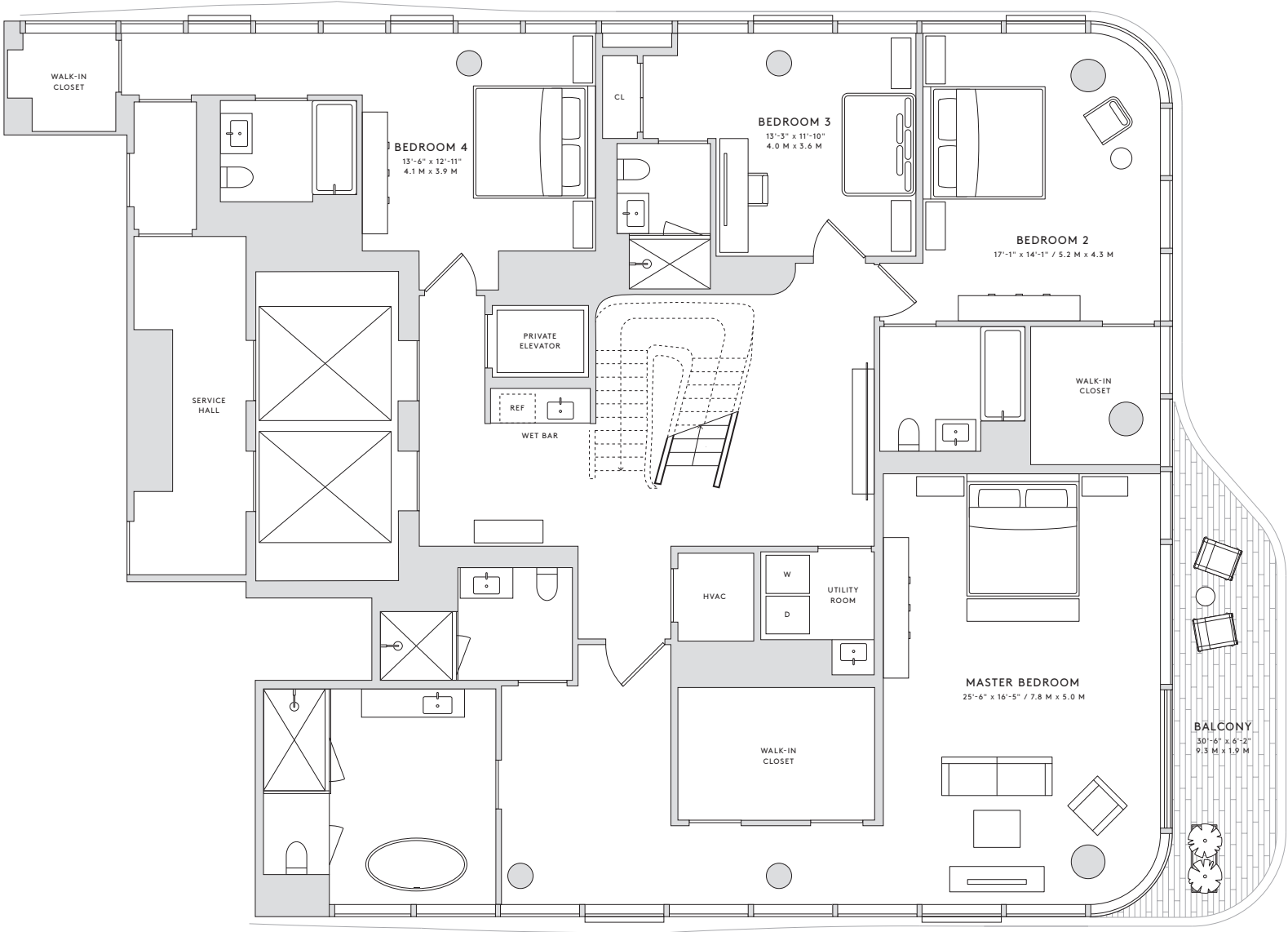
Interior: 6,853 Sq. Ft. /673 Sq. M.  
Exterior: 2,552 Sq. Ft. /237 Sq. M.

- » 2,218-square foot Wraparound Roof Terrace
- » Outdoor Kitchen with Grill, Sink and Refrigerator
- » Corner Master Bedroom Suite with Balcony, Two Dressing Rooms and Two Bathrooms
- » Wet Bar
- » En-Suite Bathrooms in Bedrooms 2, 3, 4 & 5
- » Two Utility Rooms with Side-by-Side Washer-Dryers and Sinks Dedicated Service Entrance

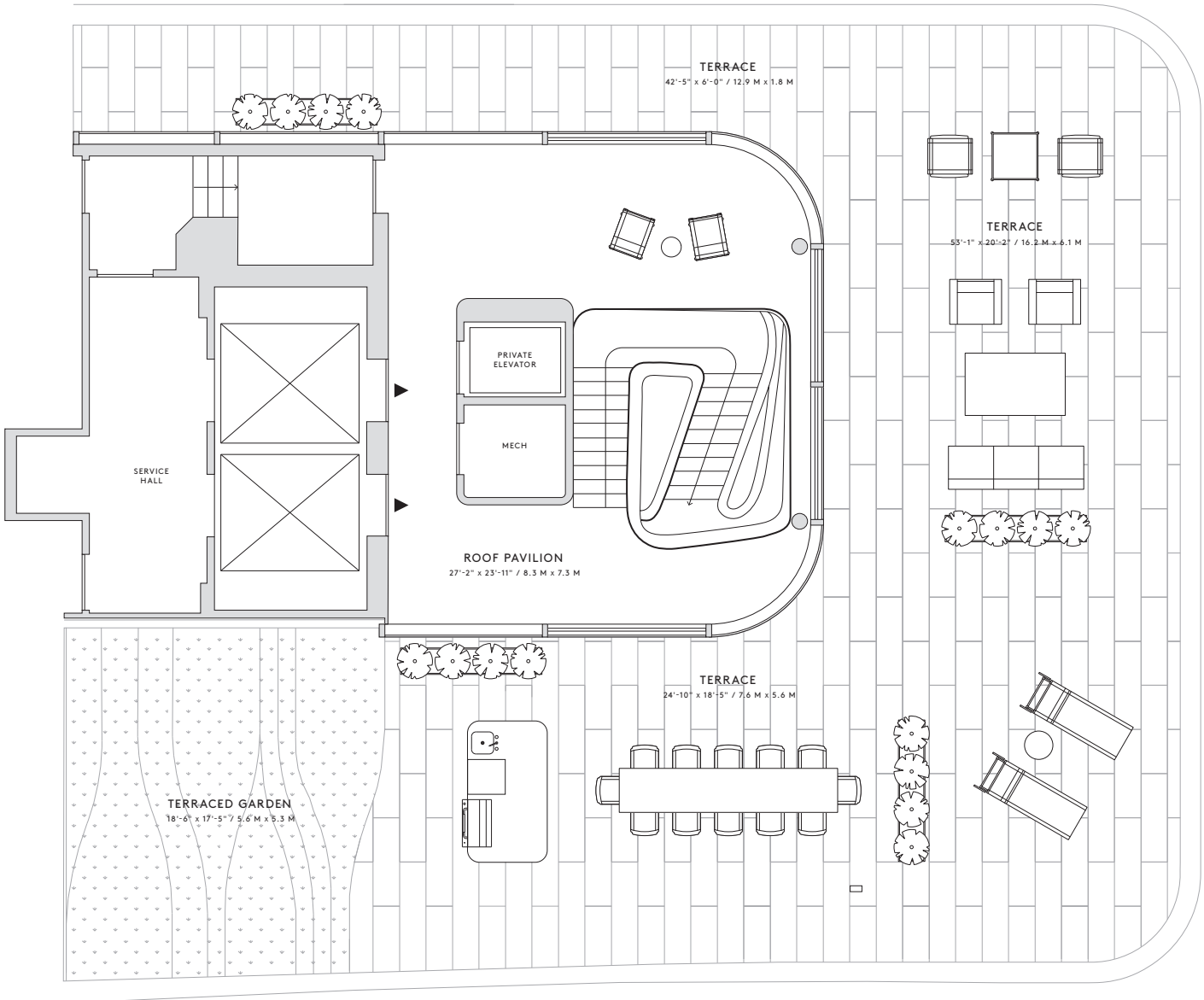




LOWER LEVEL



ROOF LEVEL



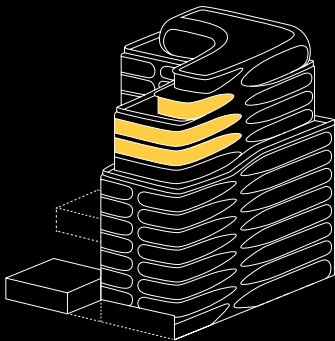
**PENTHOUSE 37**  
LEVEL 18 & 20  
ELEVATION 105' AND 116'  
ROOF TERRACE  
ELEVATION 130'

5 BEDROOMS  
6 BATHS  
POWDER ROOM

- » Triplex Penthouse
- » South, East & North Exposures
- » Direct Elevator Entrance
- » Private In-Residence Elevator
- » 1,250-square foot double-corner Great Room with Balcony and Fireplace
- » Library
- » Windowed Eat-In Kitchen

Interior: 6,853 Sq. Ft. /673 Sq. M.  
Exterior: 2,552 Sq. Ft. /237 Sq. M.

- » 2,218-square foot Wraparound Roof Terrace
- » Outdoor Kitchen with Grill, Sink and Refrigerator
- » Corner Master Bedroom Suite with Balcony, Two Dressing Rooms and Two Bathrooms
- » Wet Bar
- » En-Suite Bathrooms in Bedrooms 2, 3, 4 & 5
- » Two Utility Rooms with Side-by-Side Washer-Dryers and Sinks Dedicated Service Entrance





## THE APEX DEVELOPMENT TEAM

---

Since its inception over three decades ago, Apex Developments has successfully become an industry leader in community development across the Greater Metropolitan Area. A hands-on commitment to innovative architecture, quality workmanship and customer care has earned Apex an unparalleled reputation within this competitive industry.

Indeed, our uncompromised vision and imaginative blend of contemporary and traditional designs has attracted many families to their distinctive communities across the GTA, including Toronto, Brampton, Mississauga, Etobicoke, Richmond Hill and Ajax. Founded in the early 1970s, the company has since expanded from custom home construction to large scale home developments, to condominiums.

An unwavering commitment to customer satisfaction and a firm belief in superior craftsmanship weaves together these projects under the Apex name. Ensuring your full confidence in the future of your home is our first priority. With over one thousand families to date investing their trust in an Apex home, we renew our commitment to you.



+1(432)303-0303



INFO@303BAY.CA



303 BAY ST. TORONTO, ON M5H 2R1 CANADA



MONDAY TO FRIDAY, 10A.M. - 5P.M.



WWW.303BAY.COM

